

A love of the wild. A sense of freedom. A feeling of wonder.
That's what South Dakota inspired in Mike Pflaum, superintendent
of Badlands National Park and lifelong admirer of the great outdoors.
What will South Dakota inspire in you?

TAKE AN ICONIC *American* ADVENTURE

You would be hard-pressed to find a landscape as rugged and stunning as the one you'll encounter in Badlands National Park. Spread out over 244,000 acres, French fur purveyors referred to it as "les mauvaises terres à traverser," or "bad lands to travel through." The Lakota named it *Mako Sica*, which roughly translates to "land bad." Superintendent Pflaum describes it a little differently.

"Spectacular pinnacles, canyons, buttes, grass-top tables—it is so amazing and so unusual." Those formations are geologic deposits which started forming during the Cretaceous Period, between 67 to 75 million years ago. Today, visitors are invited to explore the area and enjoy camping, horseback riding, and hiking. Superintendent Pflaum told us his personal recommendations.

"You have to experience several of the overlooks. Big Badlands and Pinnacles are two that are some of our better options. If you want to take a classic national park trail, do the Notch Trail and the Cliff Shelf Trail."

If you're on the fence about making the trip to this unique area, Superintendent Pflaum offered these words just for you. "You will be amazed. It's a world-class place to visit. One can have a real quintessential American experience by coming to a place like the Badlands."

We couldn't agree more.



WHAT CAN YOU EXPECT ON YOUR AUTUMN TRIP TO SOUTH DAKOTA?

GREAT *People*

When you travel to the land of Great Faces and Great Places, you're guaranteed to find friendly locals waiting to welcome you to this great state.

GREAT *Views*

South Dakota's stunning landscapes take on new life during the cooler autumn months. Bursts of yellow and orange blend with splashes of deep crimson, turning the scenery into a vibrant ballet of color.

GREAT *Events*

Fall is the only time to experience some of the state's truly great happenings. From the annual Buffalo Roundup in Custer State Park to the Volksmarch at Crazy Horse Memorial—it really is a season of adventure.

GREAT *Destinations*

Most journeys begin with a single step. Your adventure to South Dakota starts with this mini-magazine. Inside these pages you will find descriptions of our state's four regions along with information about some of our greatest destinations and attractions.

WHERE YOU GO IS UP TO YOU. BUT NO MATTER WHAT
YOU CHOOSE—WE KNOW IT WILL BE *Great*.

TravelSouthDakota.com // 800-732-5682

102,500 of these were printed and distributed at a cost of 73¢ per piece by the South Dakota Department of Tourism and cooperative partners. The businesses and events represented are paid participants in a cooperative program offered by the South Dakota Department of Tourism. This marketing piece does not include all available operators in each category. The use of names and images of private companies in this publication are for information purposes and visual appeal only and do not imply endorsement by any state or federal agency.

SOUTH DAKOTA DEPARTMENT OF TOURISM
711 East Wells Avenue // Pierre, South Dakota 57501

PRSRT STD
US POSTAGE
PAID
SOUTH DAKOTA
DEPARTMENT
OF TOURISM



South Dakota

TravelSouthDakota.com // 800-732-5682



Great FACES
GREAT *Places*

A love of the wild. A sense of freedom. A feeling of wonder.

That's what South Dakota inspired in Mike Pflaum, superintendent of Badlands National Park and lifelong admirer of the great outdoors.

What will South Dakota inspire in you?

TAKE AN ICONIC *American* ADVENTURE

You would be hard-pressed to find a landscape as rugged and stunning as the one you'll encounter in Badlands National Park. Spread out over 244,000 acres, French fur purveyors referred to it as "les mauvaises terres à traverser," or "bad lands to travel through." The Lakota named it *Mako Sicam*, which roughly translates to "land bad." Superintendent Pflaum describes it a little differently.

"Spectacular pinnacles, canyons, buttes, grass-top tables—it is so amazing and so unusual." Those formations are geologic deposits which started forming during the Cretaceous Period, between 67 to 75 million years ago. Today, visitors are invited to explore the area and enjoy camping, horseback riding, and hiking. Superintendent Pflaum told us his personal recommendations.

"You have to experience several of the overlooks. Big Badlands and Pinnacles are two that are some of our better options. If you want to take a classic national park trail, do the Notch Trail and the Cliff Shelf Trail."

If you're on the fence about making the trip to this unique area, Superintendent Pflaum offered these words just for you. "You will be amazed. It's a world-class place to visit. One can have a real quintessential American experience by coming to a place like the Badlands."

We couldn't agree more.



53RD ANNUAL BUFFALO ROUNDUP & ARTS FESTIVAL

The rumble starts underfoot as the first of the 1,300 buffalo crests the hill. Before long, the mighty animals are stampeding alongside cowboys, cowgirls, and park personnel, all attempting to herd the animals towards the Buffalo Corrals. It's an incredible spectacle and only part of a fun-filled weekend that includes a buffalo auction and Arts Festival.



CRUISE SPEARFISH CANYON

This 22-mile long stretch of scenic South Dakota is by far the most popular for anyone seeking a true autumn experience. Popular stops along the way include Bridal Veil Falls and Roughlock Falls, two waterfalls whose beauty will give you pause, especially when they're surrounded by vibrant shades of yellow, orange, and red.



TRAVEL DOWN THE MICKELSON TRAIL

Located in the heart of the Black Hills, this 109-mile path brings hikers, bicyclists, and horseback riders to some of western South Dakota's most magnificent outdoor destinations. Most of the trail passes through National Forest land, which is particularly lovely during the fall season.



HOP ABOARD THE 1880 TRAIN

One of the best ways to take in the fall colors of the Black Hills is from the seat of a vintage steam train. The 20-mile round trip takes you from Hill City to Keystone and offers stunning views of the area. For added fun, get tickets to the Oktoberfest Express, happening September 29. You'll be treated to seasonal beer, German food, and live polka music.



TAKE A STROLL THROUGH A PUMPKIN PATCH

No fall trip is complete without stopping at a pumpkin patch. You'll find them all across the state, each with its own unique events and activities. Spearfish Valley Produce opens up their patch in the early fall, which also includes a corn maze and petting zoo. If you're in eastern South Dakota, That Pickin' Patch is the perfect place to visit on a brisk autumn morning.

WHAT CAN YOU EXPECT ON YOUR AUTUMN TRIP TO SOUTH DAKOTA?

GREAT *People*

When you travel to the land of Great Faces and Great Places, you're guaranteed to find friendly locals waiting to welcome you to this great state.

GREAT *Views*

South Dakota's stunning landscapes take on new life during the cooler autumn months. Bursts of yellow and orange blend with splashes of deep crimson, turning the scenery into a vibrant ballet of color.

GREAT *Events*

Fall is the only time to experience some of the state's truly great happenings. From the annual Buffalo Roundup in Custer State Park to the Volksmarch at Crazy Horse Memorial—it really is a season of adventure.

GREAT *Destinations*

Most journeys begin with a single step. Your adventure to South Dakota starts with this mini-magazine. Inside these pages you will find descriptions of our state's four regions along with information about some of our greatest destinations and attractions.

WHERE YOU GO IS UP TO YOU. BUT NO MATTER WHAT
YOU CHOOSE—WE KNOW IT WILL BE *Great*.

TravelSouthDakota.com // 800-732-5682

THE *Black Hills*

A REGION WHOSE GREATNESS KNOWS NO BOUNDS.



The Black Hills of South Dakota offers majestic granite spires, pine-covered peaks and unique rock outcroppings. Called "Paha Sapa," (Lakota for "black hills") this region is full of picturesque scenery and ample opportunity for foliage viewing. With one of the largest concentrations of national parks, monuments, and caves in the Midwest, there's no end to the beauty or the fun.

BELLE JOLI WINERY

605-347-WINE(9463) // BelleJoli.com

Arouse your senses and experience the exquisite flavors of our sparkling wine creations utilizing the traditional champagne method. Our state-of-the-art Sparkling House facility features an awe-inspiring outdoor patio that overlooks our 5-acre vineyard bordering the majestic ponderosa pines of the rugged Black Hills of Sturgis. Sunday Brunch 10AM-1PM.



BEST WESTERN RAMKOTA HOTEL RAPID CITY

605-343-8550 // www.HotelsInRapidCitySD.h.BestWestern.com

Offering exceptional Western hospitality and fresh, spacious rooms and suites. Complimentary waterpark, Wi-Fi, and fitness center for guests to enjoy. Our on-site, award-winning Minervas Restaurant and Bar offers exceptional American cuisine. Conveniently located at I-90 and LaCrosse Street, Exit 59. Shopping and dining options nearby. Pets welcome.



CHEYENNE CROSSING—STAGE STOP CAFÉ

605-584-3510 // CheyenneCrossing.org

Our award-winning restaurant is home to the Legendary Indian Taco as seen on Food Network. Our "scratch" kitchen serves breakfast, lunch, and dinner featuring authentic recipes made with fresh ingredients. Unique gift shop and more. Located at the south entrance to Spearfish Canyon near Lead.



© CRAZY HORSE MEMORIAL

605-673-4681 // CrazyHorseMemorial.org

Celebrate Native American history and culture at Crazy Horse Memorial®, home to the world's largest mountain carving-in-progress! Enjoy the museum, cultural center, sculptor's studio-home, restaurant, and gift shop. Open year-round. Artists, performers, and a nightly laser-light show are available in-season. Visit our website for special events.





CUSTER STATE PARK

888-875-0001 // CusterStatePark.com

Enjoy the spectacular beauty of this 71,000-acre vacation paradise in the fall. Scenic drives burst with autumn colors. Visitors enjoy a relaxed atmosphere at the Park's four lodges and eight campgrounds. Take in special events like the annual Buffalo Roundup and Arts Festival, September 27-29.



HISTORIC DEADWOOD

800-344-8826 // Deadwood.com

History. It's what you'll find—and what you'll make. Walk in the footsteps of Wild West legends, visit the gravesites of Wild Bill Hickok, Calamity Jane, and Seth Bullock, try your luck in the gaming halls, and explore world-class museums. See how Deadwood has been entertaining guests since 1876!



DEADWOOD GULCH GAMING RESORT

800-695-1876 // DeadwoodGulchResort.com

Pine-covered hillsides and a relaxing creek await you at Deadwood Gulch Gaming Resort. Snuggle into your hotel room after experiencing the area's colorful history or creating your own Black Hills adventure. A good meal is steps away at our Creekside Restaurant and there's always time for entertainment at our full-service lounge and 24-hour casino.



DEADWOOD MOUNTAIN GRAND

877-907-GRAND(4726) // DeadwoodMountainGrand.com

This. Place. Rocks! Deadwood Mountain Grand offers upscale elegance and amenities that will exhilarate your senses. World class cuisine, spa, sports bar, and more than 40 concerts and events each year make Deadwood Mountain Grand THE place for rock stars, movie stars, and working-class stars that are looking for an unforgettable experience.

HOT SPRINGS

800-325-6991 // HotSprings-SD.com

Located 10 minutes south of Wind Cave National Park, Hot Springs is home to naturally warm mineral water and attractions such as Evans Plunge Mineral Springs, The Mammoth Site, Pioneer Museum, Black Hills Wild Horse Sanctuary, and Southern Hills Golf Course. Experience the Fall River Hot Air Balloon Festival August 25 & 26!



THE LODGE AT DEADWOOD

605-584-4800 // DeadwoodLodge.com

We have 140 spacious rooms and Deadwood's only indoor water playland. Las Vegas-style casino featuring 280 slots, poker, and Blackjack. Dine in the Deadwood Grille or in Oggie's Sports Bar & Emporium. Convention center with meeting rooms for 10 to 1,700. Some of the best views in the area!



THE MAMMOTH SITE

605-745-6017 // MammothSite.org

We Dig Big! The Mammoth Site is an indoor and active paleontological dig site and accredited museum that's home to the largest concentration of mammoths in the world! Located in **Hot Springs**, we offer guided tours, summer educational programs, gaming app, learning center, theaters with video, and exhibits. Open year-round and features universally accessible walkways.



NATIONAL GRASSLANDS VISITOR CENTER

605-279-2125 // www.fs.fed.us

The only Visitor Center for all 20 National Grasslands! The National Grasslands Visitor Center in **Wall** is a family friendly Forest Service facility featuring an award-winning 20-minute film, interactive exhibit, Junior Ranger program, short walking tours, and daily interpretive programs. Rangers help you get most of your time with information on recreational opportunities. Free admission.





PINE REST CABINS

605-877-1908 // PineRestCabins.com

Mountain ambiance with plenty of modern comforts such as cable TV, Wi-Fi, sauna, and hot tub. Mount Rushmore National Memorial, Crazy Horse Memorial, Custer State Park, and the Mickelson Trail are all less than twenty minutes from your cabin. One mile south of Hill City. Open year-round.



RAPID CITY

800-487-3223 // VisitRapidCity.com

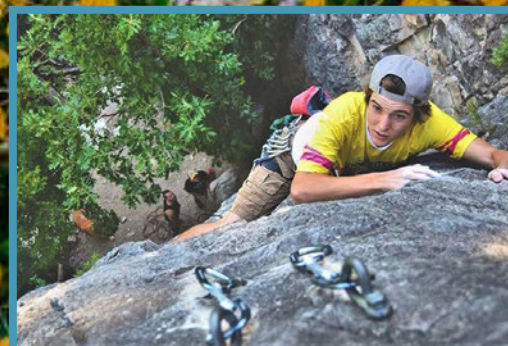
Explore Rapid City and find hidden gems such as Main Street Square, Art Alley, and the City of Presidents. Browse shops and museums, relax for a bite to eat, and explore hiking spots like Skyline Wilderness Area where you'll meet up with prehistoric reptiles at Dinosaur Park and experience spectacular 100-mile views.



REPTILE GARDENS—MEMORIES YOU'LL NEVER FORGET

605-342-5873 // ReptileGardens.com

Take a stroll through our lush botanical gardens and indoor jungle full of tropical plants and flowers. Get up close and take a photo with Tank or Ouazi, our giant Aldabra Tortoises. Explore the world's largest collection of reptiles and watch one of our wildlife shows. Open March-November. South of Rapid City on Hwy 16.



SPEARFISH

605-717-9294 // VisitSpearfish.com

Limestone canyons, flowing waterfalls, and pristine beauty make Spearfish a sanctuary for those seeking the ultimate escape. Guests are steps away from peaceful hiking trails, tranquil streams, and serene wildlife. Outdoor enthusiasts will find top-notch sport climbing, mountain biking, and fishing. Come find your adventure in Spearfish.

WALL—YOUR WINDOW TO THE WEST

888-852-9255 // Wall-Badlands.com

Travel Badlands Loop Scenic Byway 240 through Badlands National Park. Visit the world-famous Wall Drug Store, the only National Grasslands Visitor Center in the country, and the unique Minuteman Missile National Historic Site. Dine in family restaurants and enjoy comfortable campgrounds and motels.



WALL DRUG STORE

605-279-2175 // WallDrug.com

Wall Drug Store, the #1 Roadside Attraction in America, has been entertaining and educating the traveling public since 1931. This 76,000-sq. ft. wonderland of free attractions includes a restaurant that seats 520. There's something for everyone at Wall Drug! Located in Wall.



87
CUST
7
4
65



Central SOUTH DAKOTA

UNEXPECTED ADVENTURE BORN FROM THE GRANDEUR OF THE GREAT PLAINS.



The Missouri River reservoirs – Oahe, Sharpe, Francis Case, and Lewis & Clark – provide more than 440 miles of waterways for boating, fishing, sailing, and kayaking within the center part of our state. This is a place where you can follow in the footsteps of famed explorers Lewis and Clark and experience Native American heritage along the Native American National Scenic Byway. While you're here, we also invite you to spend your time exploring Pierre, South Dakota's capital city.

AKTA LAKOTA MUSEUM & CULTURAL CENTER

800-798-3452 // Atkalakota.org

The Lakota phrase "Akta Lakota" translates to "honoring the people." Located in **Chamberlain** on the campus of St. Joseph's Indian School, the museum strives to preserve and promote the Sioux Indian culture through the arts and history of the people. Free admission. I-90, Exit 263.



AL'S OASIS

605-234-5054 // AlsOasis.com

We have it all! Restaurant/Last Chance Saloon features a salad bar, homemade pie, buffalo burgers, and 5 cent coffee. Clothing store and gift shop with famous name brands and unique keepsakes and gifts. Large supermarket. Baymont Inn & Suites and campground. Located in **Oacoma**. I-90, Exit 260.

ARROWWOOD RESORT AT CEDAR SHORE

605-734-6376 // CedarShore.com

Full-service resort accommodating your family getaway or romantic setting for two. Tucked in the bluffs of the Missouri River, enjoy serene views from sunrise until sunset. Dine. Drink. Relax. If you never leave the outdoor deck, we understand. Located in **Oacoma**.



CHAMBERLAIN/OACOMA

605-234-4416 // ChamberlainSD.com

Located at the crossroads of I-90 and the Missouri River, Chamberlain and Oacoma are known for excellent fishing and big game/pheasant hunting. See the new 50-foot Dignity sculpture overlooking the valley at the I-90 Information Center. Explore the history of the Sioux Nation at the Akta Lakota Museum and Cultural Center.



PIERRE

605-224-7361 // Pierre.org

Welcome to a sportsman's paradise! Walleye, smallmouth bass, salmon, northern pike, and more are abundant year-round in the waters of Lake Sharpe and Lake Oahe. Bag pheasants, sharp-tailed grouse, Canadian geese, antelope, and prairie dogs throughout the area. Enjoy water recreation, hiking, historic sites, memorials, and state museums in South Dakota's capital city.



THE GREAT *Northeast*

FALL FOR THE FRESH GLACIAL LAKES AND EXPANSIVE PRAIRIES.



If you love the great outdoors, you'll feel right at home in the northeastern region of South Dakota. With year-round fishing, you're always invited to cast a line. Bass, walleyes, and pike are just a few of the species you can pull from our local waters, even during the cool autumn months. You'll also discover communities like Watertown, a place where arts & culture intersect with the splendor of nature.

ABERDEEN—THE FIELDS ARE CALLING!

605-225-2414 // VisitAberdeenSD.com

Nestled in the prairies of northeastern South Dakota, Aberdeen boasts numerous hunting lodges, fine dining, and pet-friendly hotels. Whether experiencing us for the first time or continuing a hunting tradition, we can't wait for you to let your pheasant hunting dreams take flight in Aberdeen! Start planning your hunt at www.HuntFishSD.com



BROOKINGS—BRING YOUR DREAMS!

605-692-6125 // VisitBrookingsSD.com

Conveniently located off I-29, Brookings offers a variety of things to do and local food to try. Pick up a Great 8 Passport and explore our one-of-a-kind attractions, including two state museums featuring art and agriculture, and the Children's Museum of South Dakota where you can meet Mama T. Rex.

CHILDREN'S MUSEUM OF SOUTH DAKOTA

605-692-6700 // PrairiePlay.org

Harvest food and move from farm to market. Greet life-size Mama T. Rex or climb among clouds. These are samples of the hands-on activities at the Children's Museum of South Dakota. With 5,000 interactive parts and 550 books, the museum supports a love of lifelong learning through exploration and discovery. Downtown **Brookings**.



COUNTRY INN & SUITES BY RADISSON

800-456-4000 // CountryInns.com/WatertownSD

You'll Love This Country! Located on I-29 and Hwy 212 in Watertown, across from the Terry Redlin Art Center, we are the ideal home base for all your Watertown adventures. Indoor pool, hot tub, fitness center, complimentary hot breakfast, free Wi-Fi, and microwave and refrigerator in every room. Pet-friendly rooms also available.



DE SMET—LITTLE TOWN ON THE PRAIRIE

866-528-7273 // DeSmetSD.com

Explore the beautiful, open prairies described in Laura Ingalls Wilder's 'Little House' books. Tour historic homes, drive a covered wagon, and discover our unique gift shops. Experience small town hospitality and charm. Abundant hunting and year-round fishing opportunities surround De Smet. Accommodations include B&Bs, lodges, campgrounds, and motels.



SOUTH DAKOTA ART MUSEUM

605-688-5423 // SouthDakotaArtMuseum.com

Stretch your horizons with art from across the prairie and around the world. See why American Art Awards named us one of America's 25 Best Museums! 15 dynamic exhibits a year showcase regional, national and international artists. The Museum Store features original artwork, gifts, and books. Located in **Brookings**. Free admission.



TERRY REDLIN ART CENTER

877-873-3546 // RedlinArt.com

Thousands come every year to experience Terry's cherished oil paintings. Now it's your turn. Immerse yourself in the wildlife and Americana scenes Terry Redlin captured on canvas. Each painting tells a story and invites us to reminisce. Start planning your visit today! Admission is free and we are open year-round. Located in **Watertown**.



WATERTOWN

800-658-4505 // VisitWatertownSD.com

Welcome to the "Great Outdoors!" A world-class fishing and pheasant hunting destination with genuine hospitality throughout the city. Enjoy award-winning cuisine, craft beer, and local wine. Visit the Redlin Art Center, home to 165 original artworks depicting wildlife and Americana by world-renowned artist and conservationist Terry Redlin.



South SOUTH DAKOTA

POPULAR STOPS, HIDDEN GEMS, AND STUNNING
VIEWS DEFINE THIS GREAT REGION.



If you think you know everything there is to do in Southeastern South Dakota—prepare to be surprised. Travel to this region and you'll be treated to one of the world's largest collections of musical instruments, 175 fishing lakes, communities ranging in size from charmingly small to Sioux Falls—the state's largest city—plus arts, culture, wineries, breweries, quaint country farms, serene camping spots, and miles of scenic trails, all made lovelier by the lush fall colors.

LEWIS & CLARK RECREATION AREA

605-668-2985 // LewisAndClarkPark.com

Lewis and Clark Recreation Area features a full-service resort and marina. Enjoy the boat rentals, cabins, motel rooms, outdoor pool, restaurant, more than 400 campsites, bike and nature trails, beaches, and multiple boat ramps. For camping, call 800-710-2267 or visit www.CampSD.com. Near **Yankton**.



MITCHELL—FIND YOUR PALACE!

866-273-CORN(2676) // VisitMitchell.com

Come exp-EAR-ience Mitchell's many historical attractions, starting with the a-MAIZE-ing Corn Palace! Plan a day of outdoor adventure, refuel at one of 50 restaurants, then kick your shoes off at our relaxing accommodations. Ask about our hunting options! Biggest stop between Sioux Falls and Rapid City. I-90, Exit 332.



SIoux FALLS—THE HEART OF AMERICA

605-275-6060 // VisitSiouxFalls.com/FreeGuide

South Dakota's largest city offers experiences for every traveler. Seek out the thriving foodie scene and microbreweries, explore the outdoors and walk amongst sculptures, or take in everything family. Stop at Falls Park—the city's namesake—in the heart of a vibrant downtown. Request a free visitor guide.



STRAWBALE WINERY

605-543-5071 // StrawbaleWinery.com

Tucked away between a 100-year-old barn, tree grove, and grape vines, this unique straw-bale constructed winery may remind you of simpler times. From grape to strawberry-rhubarb, we have more than 20 different wines to choose from. Our relaxing farm setting and surroundings will allow you to experience life in slow motion. Located near **Sioux Falls**.



YANKTON

605-665-3636 // VisitYanktonSD.com

Explore all Yankton has to offer! Camp, swim, boat, hike, and relax at Lewis & Clark Lake or kayak and fish in Lake Yankton with views of Gavins Point Dam. Experience Yankton's historical Meridian District - full of local shopping and dining gems, and the double-decker Meridian Bridge that overlooks the mighty Missouri River.



SOUTH DAKOTA STATE PARKS

605-773-3391 // GFP.SD.gov

Take a scenic drive through one of our 64 parks and recreation areas throughout South Dakota and experience views you have to see to believe. Spend a day beachside or grab your hiking gear. Now is the perfect time to get outdoors and see what the South Dakota State Parks have to offer.





FIVE *Autumn* ACTIVITIES EVERYONE SHOULD EXPERIENCE

What makes fall such a great time to visit South Dakota? For starters, the cooler weather and incredible colors. But that's only the beginning.

As you're putting together your autumn itinerary, we wanted to share five fall recommendations every visitor should experience. Even if you can only make it to one, you're guaranteed to have a really great time.